



## 2005 Catalog

2305 East Hwy. 12, Willmar  
(Across from Holiday Inn)  
(320) 235-6010



*25 Years &  
Still Growing*

Landscape Services  
Professional Consultation &  
Landscape Design  
Planning – Planting Construction

Check out our new website:  
[www.stacysnursery.com](http://www.stacysnursery.com)

**Open  
House  
April 29 - May 1**

**Come in & check  
out our specials!  
Refreshments will be  
served daily**

## HELLO FROM EVERYONE AT STACY'S!!

Generations of Excellence:  
Experience...Knowledge...Quality...

At Stacy's we can't stress our experience, education and knowledge enough. If we are designing a home landscape or simply helping you pick the best tomato plant, we can offer our knowledgeable and experienced staff to service you, the customer, with a quality product as reasonably priced as possible.

We have learned over the last 25+ years that listening to our customers is the best education out there. Our customers have been gardening

for years; they teach us what grows best for them, what varieties do the best and help keep us on our toes with the new knowledge that is out there.

We look forward to seeing everyone this spring. There are many new items in the store and new varieties of plants in the greenhouse and we can't wait to hear what our customers think.

*All the Staff at  
Stacy's*



# FRUITS AND FRUIT TREES



## PEARS \$23<sup>95</sup>

### Gourmet

Medium size fruit, greenish yellow to yellow. Great for desserts.

### Luscious

Juicy, sweet, medium to small bright yellow fruit. Excellent dessert pear.

### Parker

Large, yellow-bronze, fine grained, tender & juicy

### Patten

Tender juicy, large.

### Summercrisp

2-3" Green/red blush, sweet & crisp.



## PLUMS \$25<sup>95</sup>

### Alderman

Burgundy Red, large, sweet

### Mount Royal

Blue, sweet & self fertile

### Pipestone

Red, large & sweet

### Superior

Red, large, sweet & juicy

### Toka

Red, medium-sized

### Waneta

Reddish, sweet & large

*Grows 10-15' tall. Bears fruit in 3-5 years*



## APRICOTS \$29<sup>95</sup>

### Standard Moongold

Large orange color, sweet but slightly acidic

### Standard Scout

Ripens in early August. Bronze, gold, blushed with red.

Good for canning and jam, fair for eating. Freestone.

### Standard Sungold

Bright clear gold color, mild & sweet.



## CHERRIES \$29<sup>95</sup>

### North Star

5-7' tall, very productive. Small stone fruit.

Sour pie cherry. Self-fertile.

### Mesabi

12' tree with long stemmed fruit, tastes in between Pie and Bing cherries. Self pollinator.

### Bali

Very hardy fruit buds. Hardy to -43°F.

Good for fresh eating - 1" fruit

*Bears fruit in 3-5 years*



## ASPARAGUS

### Washington (2 year bareroot)

Large spears - excellent taste, heavy yield - **\$.59**

### Jersey Knight (2 year bareroot)

Male variety, heavy yield - **\$.19**

**Purple Passion** (2 year bareroot) Dark purple variety that is sweeter than standard varieties. - **\$.19**



## GRAPES \$12<sup>95</sup>

• Edelweiss (Greenish-White)

• Swenson (Red)

• Valiant (Blue)

## RHUBARB \$8<sup>95</sup>

### Chipmans Canadian Red (No. 1)

Large stalks that are red from top to bottom. Juicy, sweet and tender. Keeps color when cooked.

## STRAWBERRIES

**25 FOR \$7<sup>95</sup>**



**Junebearing** - Allstar - Honeoye - Jewle Kent - Lester - Surecrop

**Everbearing** - Ft. Laramie - Ozark Beauty Quinault - Tribute - Tristar

## RASPBERRIES

**\$2<sup>95</sup>**

**Junebearing** - Boyne, Latham, Royalty

**Everbearing** - Fall Gold, Heritage

## BLUEBERRIES \$13<sup>95</sup>

**Northblue** 20-25" tall bush, glossy green leaves, dark blue, firm, superior flavor fruit.

**Polaris** 30"-40" tall bush, firm berry with excellent flavor. Fruit will store up to 8 weeks.

**St. Cloud** 4' tall, mature plants average 7 lbs. per year. Very good flavor.

## CURRENT \$10<sup>95</sup>

**Red Lake** - 2 year, No. 1 Long, full stems, easy picking. Large dark red berries. Nice foundation plant.

## MORE FRUIT TREES ON BACK

# PERENNIALS

## A

**Alkanet (Brunnera) - 2 varieties** ●●●●  
Large green heart shaped leaves, tiny clusters of small blue flowers. Likes partial shade the best. Grows 12"

**Aster - 4 varieties** ●  
Daisy like flowers, mixture of colors. Grows best in well drained soil, with full sun. 8"-12" tall.

**Astilbe - 17 varieties** ●●●●  
Beautiful colored flowers on tall spikes. Blooms from early summer to late fall. Likes partial shade to shade in moist soil.

## B

**Baby's Breath (Gypsophila) - 3 varieties** ●  
Excellent in fresh or dried flower arrangements. Blooms in June-July and again in late summer if flowers are cut. Grows 18"-24" tall. Full sun.

**Balloon Flower (Platycodon) - 3 varieties** ●  
Flowers are bell shaped & bloom from July - August in either blue or pink. Grows 20"-24" tall in full sun.

**Bee Balm (Monarda) - 4 varieties** ●●●●  
Blooms in mid-summer with lavender-rose flowers a top a mound of dark green, crinkles & highly mildew resistant foliage. Plant in full sun with moist well-drained soil. Grows 15"-18".

**Bell Flower (Campanula) - 4 varieties** ●●●●  
Compact plant with either blue or white flowers. Blooms all summer. Prefers well-drained soil in sun to part shade. Grows 6"-10" tall.

**Black Eyed Susan (Rudbeckia)** ●  
Deep yellow daisy-like flowers with black center cone. Blooms July - September. Plant in full to partial sun. Grows 24" tall.

**Bleeding Heart (Dicentra) - 4 varieties** ●  
Long branches of heart shaped flowers in white or pink. Blooms in early summer. Likes full sun to part shade & moist well-drained soil. Grows from 18"-30".

**Butterfly Bush (Buddleia) - 3 varieties** ●  
Dense flower spikes 6" - 10" long in late summer. Tender plant requires winter coering. Full sun. Grows up to 5' tall.

## C

**Candytuft (Iberis)** ●  
Clusters of small white flowers on dwarf plants with narrow leaves. Drought tolerant. Has a variety of uses. Grows 8"-12".

**Catmint (Nepeta) - 2 varieties** ●  
Use as edging for paths. Trumpet shaped light purple-blue flowers bloom in the early summer. Grows 18"-24".

**Clematis - Several varieties** ●  
Perennial climber with a variety of flower shapes and colors. Likes to have cool, moist roots.

**Columbine (Aquilegia) - 8 varieties** ●●●●  
Blue, pink, red, lavender, yellow & white flowers from mid to late spring. Will grow from 12"-36" depending on the type. Full sun - partial shade, likes moist woody soil.

**Coneflower (Echinacea) - 4 varieties** ●  
2"-3" flowers have a brownish central cone surrounded by purple petals. Flowers mid summer & continues until fall. Tolerant of heat, drought & wind. Full sun-partial shade. 18"-36" tall.

**Coral Bells (Heuchera) - 7 varieties** ●●●●  
Round leaves with dainty bell shaped flowers on branched spikes in May-July. Full to partial sun. Grows 18"-24".

**Coreopsis - 7 varieties** ●  
Many shades of yellow flowers, all excellent for cutting. Likes full sun. 12"-24" tall.

**Creeping Phlox - 3 varieties** ●  
Ground cover for rock gardens, borders, bank & slopes. Blooms April - May. Full sun. Grows 4"-6".

## D

**Daylily - More than 15 varieties** ●  
**Delphinium (Larkspur) - 3 varieties** ●  
They are noted for their tall, stately, & dignified appearance. Blossoms appear in June & possibly again in September. Full sun. Grows 14"-30" tall.

**Dianthus - 4 varieties** ●●●●  
Small fragrant flowers in a variety of colors. Early bloomer, prefers full sun & well-drained soil. Grows 6"-12" tall.

## E-F

**Evening Primrose (Oenothera) - 2 varieties** ●●●●  
Profuse large, fragrant blooms from June to September. Full sun, well-drained sandy soil. Grows 12" tall.

**Fern - several varieties** ●●●●  
Spikes of green fronds in a variety of heights.

**Forget-Me-Not (Myosotis) - 2 varieties** ●●●●  
Small blue flowers on a compact plant in May & June. Part sun or shade, moist, well drained soil. Grows 4"-12".

**Foxglove (Digitalis) - 2 varieties** ●●●●  
Sturdy stalks with tubular flowers in June & July. Grows 3'-5' tall. Sun to partial sun.

## G

**Gaillardia - 3 varieties** ●  
Blooms from early summer until frost in reds & yellows. Likes full sun & well-drained or dry soil. Grows 12"-30" tall.

**Garden Lily - 3 varieties** ●  
Hardy, easy to grow lilies that provide excellent color in the garden as well as a cut flower inside. Full sun to part shade, well-drained soil. 14"-18" tall.

**Garden Phlox - 4 varieties** ●  
Improved disease resistant varieties. Blooms from mid to late summer. Full sun. Grows 30"-42" tall.

**Geranium - 4 varieties** ●  
Long flowering period with peak bloom in late spring. Has attractive foliage. Different varieties grow from 10" to 3' tall.

## H

**Hibiscus - 2 varieties** ●  
Large impressive flowers. Blooms from midseason to frost. Full sun.

**Hollyhock (Alcea) - 4 varieties** ●  
Tall spikes with ruffled double ball-shaped flowers. Likes to grow in full sun. Grows 4'-6" tall.

**Hosta - several varieties** ●●●●  
Mounds of broad leaves. Sends up spikes with white or lavender flowers. Variety of light tolerances and height choices.

## I-K

**Iris - 6 varieties** ●●●●  
Long graceful stems hold 1"-2" flowers above the slender arching foliage. Full sun, moist, well-drained soils. Grows 11"-36" tall.

**Jacob's Ladder (Polemonium) - 5 varieties** ●●●●  
Bushy mounds of compound leaves resembling runs on a ladder. Sky blue bell shaped flowers in late spring & early summer. Likes partial shade & well-drained soil. Grows 18"-24" tall.

**Korean Houttuynia** ●●●●  
Heart shaped leaves with yellow, green, bronze & scarlet red. White flowers in summer. Sun to shade. Grows 6"-9" tall.

## L

**Lady's Mantel (Alchemilla)** ●●●●  
Evergreen ground cover with rounded, lobed leaves. Tiny yellowish star shaped leaves in June. Grows 18" tall.

**Lamb's Ears (Stachys)** ●  
Soft, wooly leaves with rose-lavender flower spikes. Grows 18"-20".

**Lamium** ●●●●  
Grows 4-8" tall. Cluster of mauve pink flowers on multi-colored foliage, yellows, greens and silvers.

**Lungwort (Pulmonaria) - 3 varieties** ●●●●  
Silver variegation on leaves. Light shade is best, can tolerate full shade. Grows 12" tall.

**Lupines - 4 varieties** ●●●●  
Stalks of blue, pink or mixed flowers in June - July. Attracts butterflies. Full to part sun. 24"-36" tall.

## M - P

**Mums - several varieties** ●  
A very broad range of flower types. Mostly fall blooming. Full sun.

**Ornamental Grasses - several varieties** ●●●●  
Many different styles, colors, and varieties.

**Painted Daisy (Tanacetum) - 2 varieties** ●●●●  
Lacy foliage, colorful daisy-like flowers in June-July. Grows 18" tall.

**Peony (Paeonia) - several varieties** ●●●●  
Large, bushy plants in a wide variety of colors and style of flowers.

**Pincushion Flower (Scabiosa) - 2 varieties** ●  
Delightful plant for the border & an excellent cut flower in pink or blue. Full sun. Grows 15"-18" tall.

**Primrose (Primula)** ●●●●  
4"-5" clusters of white, red, purple, blue-rose or coppery flowers. Likes rich, moist, woody soil & part sun. Grows 6"-12" tall.

## R-S

**Russian Sage (Perovskia) - 2 varieties** ●  
Semi-woody stems with coarsely toothed gray green leaves. Airy spires of lavender-blue flowers in late summer through fall.

**Salvia - 6 varieties** ●  
Compact, round plants bloom all summer in a variety of shades of blue and purple. Grows 18"-24".

**Sedum - 6 varieties** ●●●●  
Blooms from mid summer to fall. Likes to grow in full sun & well-drained soil. Grows 12"-18" tall.

**Shasta Daisy (Leucanthemum) - 7 varieties** ●●●●  
Large flowers with white petals. Blooms in June-July. Nice cut flower. Grows 10"-30" tall.

**Silver Mound (Artemisia) - 2 varieties** ●●●●  
Low growing mound shaped plant with silvery-gray foliage. Full sun. Will tolerate average to poor, well-drained soil. Grows 12" tall.

**Speedwell (Veronica) - 4 varieties** ●●●●  
Nice summer flowering plant in a variety of colors and heights.

**Spiderwort (Tradescantia) - 4 varieties** ●●●●  
Grass like foliage. Blooms in late June to fall. 18"-24" tall. Sun to shade.

**Sweet Pea (Lathyrus)** ●●●●  
Vigorous climber used on fences, trellises or rocks. Variety of flower colors blooming in July-August. Grows 4-8' long.

## T-Y

**Vinca** ●●●●  
Evergreen foliage forms a dense cover. Blue flowers and either yellow and green leaves, or green and white leaves.

**Yarrow (Achillea)** ●  
Fernlike foliage, pastel colors. Full sun. 24" tall.

4-1/2" Perennials \$4<sup>95</sup>      Gallon Perennials \$9<sup>95</sup>

● = Full Sun      ● = Partial  
● = Shade

No. 1

# Shrub Roses

# \$18.95



• Minnesota Hardy Shrub Roses need not be covered in the winter.

### RED SHADES

**Up to 3' Tall**  
**Champlain**

Double 3" flower in clusters. Extremely disease resistant, fresh scent. (R)

**Charles Albanel**  
**Cuthbert Grant**  
**My Hero**

3", 20 petal flowers, very fragrant. (R)  
Double 4" flowers in clusters. Nice plant. (R)  
3.5" double flowers are a medium red fading to deep pink when mature (E)

**3'-5' Tall**  
**Hope for Humanity**

Double 3" flower, upright growth, good resistance to powdery mildew. (E)

### PINK SHADES

**Up to 3' Tall**  
**Adelaide Hoodless**  
**Carefree Beauty**  
**Chuckles**  
**Morden Blush**  
**Nearly Wild**  
**Winnipeg Parks**

Semi-double, 2 1/2", slightly fragrant. (R)  
Semi-double 2" flowers, orange fruit in the fall. (E)  
3-1/2" single flowers in large cluster. (E)  
3" floriferous flowers, long blooming period. (R)  
Single, large flowers. Very attractive plant. (E)  
Semi-double 2-1/2" flowers, compact growth, 2' tall. (E)

**3'-5' Tall**  
**Carefree Delight**  
**Carefree Wonder**  
**Morden Centennial**

1-1/2" single flowers, excellent disease resistance. (E)  
2-3" flowers on rounded plant, dies back in winter. (E)  
4" flowers with a light scent produced in clusters. (R)

### YELLOW SHADES

**Up to 3' Tall**  
**Carefree Sunshine**

Single 3-1/2" flower cluster, in 3 to 5, golden yellow. Disease resistant foliage. (E)

**Morden Sunrise**

Semi-double 3" flower. Creamy, orange yellow. Disease resistant foliage.

**Winter Sunset**

Double flower. Hybrid tea-like amber yellow with orange at the base. Dark, glossy green foliage. (E)

**3'-5' Tall**  
**JP Connell**

Pale Yellow - Ex...2-3" flowers on upright plant. Dies back to crown. (R)

### WHITE SHADES

**Up to 3' Tall**  
**Henry Hudson**  
**Morden Snowbeauty**

2 1/2" double flower. (R)  
3" semi-double white flowers everblooming in clusters of 3-10. Improved resistance to black spot. (E)

**3'-5' Tall**  
**Macy's Pride**

4-5" double flowers are a creamy white and age with a hint of pink (R)

**Sea Foam**

Medium double fragrant flowers. 3' ground cover type. (R)

### CLIMBERS

**Henry Kelsey**

Red - Flowers in clusters of 9-18 at a time, very hardy, disease resistant (R)

**John Cabot**  
**Ramblin' Red**

Fushia Pink - Flowers freely June-July, very hardy (R)  
Red - Double 4", foliage displays a touch of red before maturing to deep, dark green, full rich red flowers. (R)

**William Baffin**

Deep Pink - Very hardy. Flowers in clusters of 30 or more. Disease resistant (R)

*Climbing bush to be trained on trellis or fence*

(P) = Parkland Series Roses. Developed in Canada. Native prairie roses. Most freeze to ground in winter.

(Ex) = Explorer Series Rose. Developed in Canada. Most are Rugosa Hybrids and extremely hardy.

(R) = Recurrent bloom. Flowers produced in succession throughout the season.

(E) = Everblooming. Continuous or repeat flowering habits.

(NR) = Non-recurrent bloom, One-time flower bloom.



# SHRUBS



### LILAC



### WOODY VINES

## \$15.95



- Common Purple** 12-15' tall; single purple flowers  
3' ..... **\$18.95**
- Common White** 12-15'; fragrant sgl. white flowers  
3' ..... **\$18.95**
- Dwarf Korean** 3-4' tall; lavender flowers in early summer  
9" ..... **\$15.95**  
2' ..... **\$21.95**
- Miss Kim** 3-5' tall; compact, pale lilac flowers in early summer; fall foliage color  
2' ..... **\$19.95**

- Miss Canada** 6-9' tall; bright pink flowers; blooms  
2' ..... **\$18.95**
- Monge** 10'-12' tall; upright Blue green foliage with single red/ purple flowers.  
15" ..... **\$18.95**
- Sensation** 8'-10' tall; single purple flowers/white border  
15" ..... **\$18.95**
- Tinkerbelle** 5'-6' tall; compact upright growth, wine-red bud opening to deep pink, fragrant blossoms.  
9" ..... **\$15.95**  
15" ..... **\$21.95**

- Bittersweet** Most adaptable; orange/red berries that dry well
- Boston Ivy** Dense, self clinging, blue-black berries red fall color; excellent for masonry cover
- Dropmore Honeysuckle** Tall growing; bright orange scarlet tubular flowers
- Trumpetvine** Coarse foliage; showy orange & scarlet flowers
- Woodbine** Rapid grower; small blue fruits attract birds; deep burgundy red fall color



# SHRUBS



## BARBERRY

**Emerald Carousel** 4'-5' tall; green foliage with yellow flowers; reddish purple fall color.

18" ..... \$15.95

**Crimson Pygmy** 2' tall; deep red foliage.

12" ..... \$24.95

**Rose Glow** 3' tall; maroon-rose foliage

15" ..... \$12.95

**Ruby Carousel** 3-3-1/2' tall; red-dish purple foliage; low rounded shape.

18" ..... \$18.95

## DOGWOOD

**Isanti** 5' tall; fine red twigs, white flowers & berries

15" ..... \$14.95

2' ..... \$21.95

**Ivory Halo** 4-5' tall; compact variegated green & white foliage

15" ..... \$21.95

2' ..... \$23.95

**Pagoda** 15-18' tall tree shrub; yellow flowers; blue fruit

4' ..... \$24.95

**Red Twiggled** 8-10' tall; red stem, porcelain blue fruit, shade

15" ..... \$9.95

2' ..... \$14.95

**Variegated** 6-10' tall; cream & green foliage; red branches

15" ..... \$14.95

## POTENTILLA

**Gold Drop** 18" tall; small yellow flowers.

18" ..... \$16.95

**Goldfinger** 2-3' tall; showy golden flowers.

15" ..... \$15.95

**Mango Tango** 2' tall; bi-color orange, red flowers.

15" ..... \$15.95

**Pink Beauty** 3' tall; bright green foliage, clean pink flowers.

12" ..... \$14.95

**Snowbird** 2 1/2-3' tall; very white double flowers

15" ..... \$15.95

## HYDRANGER

**Annabelle** 4-6' tall; large pure white flowers; shade plant

18" ..... \$24.95

**Compact PeeGee** 6' tall; same as regular PeeGee; but smaller.

2' ..... \$19.95

**Endless Blooming** 3-5' tall; 8" flowers, with pink or blue blooms depending on soil acidity.

2' ..... \$19.95

**PeeGee** 8' tall; showy large conical double white flowers that turn pink in fall;

2' ..... \$19.95

## MOCK ORANGE

**Golden** 3-4' tall; golden leaves with fragrant white flowers

12" ..... \$14.95

**Minnesota Snowflake** 6-8' tall, with sweetly scented double white flowers.

2' ..... \$15.95



## SPIREA

**Japanese White** 18" tall; white flowers

18" ..... \$18.95

**Little Princess** 18" tall; dense pink flowers

12" ..... \$14.95

15" ..... \$16.95

18" ..... \$18.95

**Norman** 2-3' tall; compact dwarf spirea, mint green foliage, raspberry red fall color and rosy pink flowers.

12" ..... \$14.95

15" ..... \$16.95

18" ..... \$18.95

**Renaissance** 5-7' tall; fountain plant. Bridalwreath white flowers in spring

18" ..... \$18.95

## VIBURNUM

**Alfredo Compact American Cranberry**

5-6' tall; has compact dense form with excellent red fall color

15" ..... \$19.95

**Bailey Compact American Cranberry**

4-5' tall; compact; white flowers; fall color

15" ..... \$19.95

18" ..... \$21.95

2' ..... \$23.95

**Blue Muffin Arrowwood** 5-7' tall; covered in beautiful white flowers in the spring, followed by clusters of blue berries.

2' ..... \$21.95

**Compact European** 4' tall; single white flowers followed by scarlet red fruit that stay on the plant

1 gal ..... \$15.95

2 gal ..... \$24.95

**Dwarf European Cranberry** 2-3' tall; Vary dense, mounded shape. Does well in all locations.

2 gal ..... \$27.95

**Mohican** 6' tall; thick dark green foliage; white flowers followed by orange-red fruit; fall color

3' ..... \$23.95

**Northern Burgundy Arrowwood** 10-12' tall; glossy dark green foliage, burgundy in fall with blue black fruit.

2' ..... \$23.95

**Onandaga** 6-8' tall; red fruit; vel-vety maroon foliage to deep green

15" ..... \$19.95

**Redwing American Cranberry** 8-10' tall; shrub for all seasons; red tinged spring foliage, white flowers then red berries, and a brilliant red fall color.

15" ..... \$19.95

**Snowball** 10-12' tall; blooms dbl. white flowers in April-May; very showy

2' ..... \$21.95

**Wentworth** 10-12' tall; heavy fruiting form of high bush cranberry, red fall color.

2' ..... \$21.95

## AZALEA \$16.95

These varieties grow 4-5' tall; and have beautiful flowers in the spring.

- Lemon Lights
- Northern Lights
- Rosy Lights

## RHODODENDRON

### \$23.95

Both grow 4-5' tall, flower and have green foliage through the summer with pleasing fall colors.

- Northern Starburst
- PJM

**Anthony Waterer** 3' tall; rose-pink flowers

15" ..... \$16.95

**Fairy Queen** 3' tall; compact shape; white flat-topped flowers in May/June.

15" ..... \$16.95

**Goldflame** 2-3' tall; light pink flowers in early summer; colorful foliage in spring & fall

12" ..... \$14.95

15" ..... \$16.95

**Gold Mound** 2' tall; light yellow foliage; pink flowers

12" ..... \$14.95

15" ..... \$16.95

**Halward's Silver** ..... 2-3' tall; dark green foliage abundant white flower in spring

15" ..... \$18.95

## MISCELLANEOUS

**Burning Bush** 8-10' tall; corky bark, red fall color

2' ..... \$24.95

**Forsythia - Northern Gold** 6-8' tall; spectacular flowers before foliage

3' ..... \$18.95

**Glossy Black Chokecherry** 4-6' tall; Ornamental shrub. White flowers in May. followed by 1/4" black fruits that hang on into winter.

3' ..... \$19.95

**Honeysuckle - Clavey's Dwarf** Compact, yellow flowers, red berries in fall

12" ..... \$14.95

**Honeysuckle - Dwarf Bush** 4' tall; mound shape; bronze foliage, small yellow flowers

15" ..... \$15.95

**Maple-Amur** 15-20' tall; spreading irregular; fall color

2' ..... \$18.95

3' ..... \$21.95

**Ninebark-Darts Gold** 3-4' tall; attractive; excellent yellow foliage white flowers and red fruit

2' ..... \$16.95

**Ninebark-Diablo** 8-10' tall; reddish purple foliage, very hardy

2' ..... \$18.95

**Plum - Dbl Flowering** 6-8' tall; double pink flowers before leaves (**Rose Tree China**)

15" ..... \$16.95

3' ..... \$22.95

3' ..... \$22.95

**Pussy Willow, French** 15-20' tall; silvery catkins

18" ..... \$10.95

**Tamarix-Summer Glow** 8-10' tall; silver-blue foliage, rosy flower spikes

15" ..... \$15.95

**Winterberry** 3-6' tall; native shrub. Large orange red berries. Male and female varieties sold as set.

15" ..... \$29.95

## WEIGELA

**Minuet** 24-30" tall; Lilac to purple flowers with purple tinged foliage.

12" ..... \$16.95

**Polka** 3-4' tall; clear pink flowers with yellow throat. Compact grower. Dark green leaves

12" ..... \$16.95

**Red Prince** 4-5' tall; upright branches; red flowers

2' ..... \$19.95

3' ..... \$22.95

**Rumba** 3' tall; Bronzy-purplish tinged leaves with dark red flowers. Rounded shape.

12" ..... \$16.95

**Wine & Roses** 4-5' tall; rounded shape with burgundy purple foliage. Rosy pink flower.

2' ..... \$17.95

# EVERGREENS

## LOW GROWTH JUNIPERS

- Blueberry Delight**  
12" tall, 4-5' spread. Dense dark green needles with contrasting blue line on upper leaf surface.
- Blue Chip**  
8-10' tall, 3-5' spread. Nice blue color all season.
- Blue Forest**  
12" tall, 3' spread. good for use in rock gardens, or as a ground cover.
- Broadmoor**  
12" tall, 3-5' spread. Nice blue color with slight bluish cast forms a mound.
- Hughes**  
15" tall, 6-8' spread. Silvery blue plant adds color to the landscape.

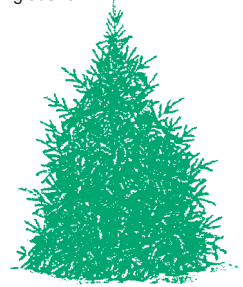
## MISCELLANEOUS EVERGREENS - UPRIGHT GROWING

- Arborvitae - Hetz Midget**  
2' tall; Dense globe form. Slow grower requires no shearing to maintain globe form.  
2 gal ..... \$29.95                      5 gal ..... \$44.95
- Arborvitae - Holmstrup**  
4-5' tall; very compact and upright  
5 Gal. .... \$44.95                      7 gal ..... \$49.95
- Arborvitae - Pyramidal**  
15' tall, narrow light green  
24" ..... \$29.95                      30" ..... \$44.95
- Arborvitae - Techny**  
10-12' tall, dark green; likes the sun or the shade  
24" - 5 Gal. .... \$39.95                      30" - 7 Gal. .... \$49.95
- Pine - Ponderosa**  
60-80' tall; large needles, tree has a broad pyramidal habit. .... Prefers moist well drained soil.  
5 Gal ..... \$49.95
- Spruce - Black Hills**  
30'-45' tall; shapely "Christmas Tree" type ever green; short blue-green needles  
1 Gal ..... \$12.95                      5 Gal. .... \$36.95
- Spruce - Colorado Blue**  
60' tall; attractive bluish color; likes fully exposed, well drained locations.  
30" -7 gal ..... \$79.95
- Yew - Upright**  
6-8' tall, rich, green, foliage likes the shade  
10 Gal. .... \$89.95

## UPRIGHT GROWTH JUNIPERS

- Arcadia**  
12-18" tall, 3-5'spread. Rich green, lacy foliage with a semi-spreading growth habit.
- Sea Green**  
4-6' tall, 4-6' spread. Mint green foliage on graceful arching branches.
- Sea Green Globe**  
2-3' tall and wide. Must be sheared to maintain globe form.

2 Gallon **\$24<sup>95</sup>**  
5 Gallon **\$34<sup>95</sup>**



## MISCELLANEOUS EVERGREENS - LOW GROWING

- Bird's Nest Spruce**  
8' tall; slow growing dwarf plant; works well in rock gardens; full sun to light shade  
2 gal ..... \$29.95
- Dwarf Norway Spruce**  
3-4' tall and wide; has attractive light green foliage.  
2 Gal ..... \$29.95
- Globe Blue Spruce**  
3'-5' tall; compact, rounded shape. Blue foliage. Slow growing.  
2 Gal. .... \$39.95
- Mugho Pine**  
3-4' dwarf, mushroom shaped pine, bright green  
2 Gal ..... \$29.95                      5 Gal. .... \$39.95
- Russian Cypress**  
1' high, 3-4' wide, low spreading does well in sun or shade  
2 gal ..... \$29.95                      5 gal ..... \$39.95
- Tew - Tauton Spreading**  
3'-4' tall; spread 4'-6'; Slow growing, resistant to winter burn  
3 gal ..... \$29.95                      5 gal ..... \$39.95



## ASH

- Patmore**  
50-60' tall; pleasing form; attractive shiny leaves; extremely hardy;  
6' ..... \$59.95    25 gal 2" ..... \$239.95  
1-1/4" ..... \$89.95
- Autumn Blaze**  
50-60' tall; adapted for the prairie region. Purple fall color.  
7' ..... \$64.95    1-1/4" ..... \$89.95
- Autumn Purple**  
50-60' tall; white seedless; rapid grower; beautiful mahogany color in the fall.  
1-1/4" ..... \$89.95
- Fall Gold**  
50' tall; upright; black ash; green foliage; bright golden-yellow in fall.  
7' ..... \$74.95    25 gal. 1-3/4" ..... \$249.95  
1-1/4" ..... \$89.95

# TREES

## LINDEN

- American**  
75'- 95'; pyramidal to rounded shape, excellent shade tree with fragrant yellow flowers.  
1-1/4" ..... \$69.95
- Redmond**  
40-50' tall; uniform, pyramidal shape, large leaves are glossy green turning bright yellow.  
1-3/4" ..... \$99.95  
25 gal-2-1/4" ..... \$229.95
- Shamrock**  
40-50' tall; broad, conical shape, vigorous growth, with stout branching.  
1-1/4" ..... \$89.95



## OAK

- Burr**  
60-80' tall; corky branches; rounded open shape; yellowish brown to purple in fall.  
1-1/4" ..... \$149.95
- Northern Red**  
60-80' tall; fastest growing of oaks. Leaves turn red in fall which hang on into winter.  
1-1/4" ..... \$149.95
- Swamp**  
50-60' tall; narrow rounded shape; grow's well in wet & upland soils; yellowish-brown to red fall color.  
1-1/4" ..... \$149.95

**All trees offered bareroot at**



## FLOWERING CRABS

### Golden Raindrops

18' tall, 13' spread; white flowers in spring followed by golden yellow fruit  
6'-7'.....\$54.95

### Prairie Fire

15-20' tall, upright spreading, red flower, maroon fruit.  
6'-7'.....\$54.95 25 gal 1-3/4".....\$199.95  
8'.....\$64.95

### Red Splendor

18-20' tall; upright & spreading; pink flowers followed by small red fruit that last through the winter  
6'-7'.....\$54.95 25 gal. 1-3/4"..... \$199.95

### Snowdrift

15-20' tall; glossy green foliage; white flowers; glossy orange red fruit.  
6'.....\$54.95 1-1/2" .....\$109.95

### Spring Snow

25-30' tall; rounded 15' spread, white flowers, no fruit.  
6'-7'.....\$54.95 25 gal. 2" .....\$199.95  
1-1/4" .....\$99.95

### Thunderchild

15-20' tall; upright spreading. Deep purple leaves, single delicate pink flowers appearing before foliage, small red fruit  
6'.....\$54.95  
25 gal. 1-3/4".....\$199.95



### Amur Chokecherry

20-25' tall; small tree producing chokecherry like flowers and fruits, unique gold brown-red bark  
7'.....\$69.95

### Double Flowering Plum

6-10' tall; small rounded tree, double pink flowers in spring.  
6'.....\$59.95

### Catalpa

50-60' tall; fast growing tree with very large, heart shaped leaves, and unusual form as it ages. 2" long white flowers in June.  
8'.....\$49.95

### Ginkgo - Autumn Gold

50-80' tall; has a symmetrical broad conical form with golden yellow fall color.  
7'.....\$189.95

### Hackberry

50-75' tall, spreading rounded shape; rapid grower.  
7'.....\$72.95 25 gal. 1-3/4".....\$239.95

### Hawthorn Snowbird

12-15' tall; 20' spread, double white flowers; sparse fruit.  
7'.....\$54.95

# TREES

## BIRCH

### River

30-40' tall; native tree; exfoliating reddish bark; interesting winter effect; golden fall color.  
5' Cl.....\$59.95

### White

35' tall; hardy & desirable; chalk-white peeling bark when older;  
5' Cl.....\$59.95 8' Cl ..... \$79.95

### Crimson Frost

30'-35' tall; foliage is a striking reddish purple color all summer, the exfoliating bark turns white with a cinnamon hue.  
7'.....\$79.95

### Weeping

30-40' tall; slender pendulous branches with white exfoliating bark; does well in moist but well drained soils.  
15 gal.....\$89.95

### Whitespire

30-40' tall; fine textured foliage with glossy dark green leaves; chalk white bark.  
5' Cl.....\$59.95

## HONEYLOCUST

### Imperial

30-35' tall; has graceful, spreading branches with lacy bright green foliage.  
8' .....\$79.95

### Sunburst

35' tall; irregular shape, bright golden foliage fades to green & colors golden yellow again in fall.  
8'.....\$79.95

## MISCELLANEOUS

### Hawthorn - Toba

12-15' tall; fragrant double white flowers turning pink; upright rounded grower.  
7'.....\$54.95

### Hydrangea - Peegee Tree

8' tall; rounded shape large conical: white flowers in July-August  
5'.....\$74.95 10 gal.....\$119.95  
6'.....\$84.98

### Lilac - Dwarf Korean

5-6' tall; same features as the shrub  
5'.....\$94.95 15 gal.....\$99.95

### Lilac - Japanese Tree

25' tall; creamy white flowers in June & July; handsome foliage  
4'.....\$49.95 7' Cl .....\$99.95

### Lilac - Tinkerbell

5-6' tall; rounded; very fragrant, wine red flowers  
5'.....\$89.95

### Mountain Ash-Cardinal Royal

20-30' tall; upright grower; brilliant red berries, rust fall color.  
8'.....\$69.95



## MAPLE

### Autumn Blaze

50-60' tall; rapid growth rate; able to grow in most soils; orange/red fall color  
6'.....\$69.95 1-1/4".....\$99.95  
1-1/2".....\$239.95 25 gal 1-3/4".....\$249.95

### Autumn Spire

50' tall; broadly columnar form, showy red flowers in spring; consistent red fall color.  
6'.....\$69.95

### Deborah

40-60' tall; broad oval shape, vigorous grower with a strong leader.  
7'.....\$69.95 25 gal 1-3/4".....\$239.95

### Emerald Luster

50-60' tall; noted for its vigorous growth and excellent branching; glossy foliage; Nice Tree !!  
7'.....\$69.95 1-1/4".....\$89.95

### Green Mountain Sugar

50-75' tall; upright oval; orange-scarlet in fall.  
10'.....\$89.95 25 gal. 1-3/4".....\$289.95  
1-1/4".....\$99.95

### Silver

60-80' tall; soft maple; very fast growing, but weak; leaves are a light green above/silvery beneath.  
6'.....\$39.95



### Mountain Ash - Oak Leaf

30' tall; upright oval shape, dark green lobed leaves. Orange red fruit  
8'.....\$69.95

### Mountain Ash - Showy

20-25' tall; slow growing tree has dark green foliage & red berries in summer.  
7'.....\$69.95

### Newport Plum

15-20' tall; upright; reddish-purple foliage; pink flowers/purple fruit  
7' .....\$49.95

### Purple Robe Locust

50' tall; rose-pink flowers, bronzy green foliage, ascending open shape.  
7'.....\$72.95

### Quaking Aspen

70' tall; Similar to Quaking Aspen, but more canker resistant, leaves move in the slightest breeze.  
7' .....\$49.95 1-1/4" .....\$69.95

### Redbud

20-30' tall; handsome tree is covered in small pink flowers before leaves appear.  
6' Cl.....\$79.95

### Willow - Prairie Cascade

35-45' tall; a hardy willow with a weeping habit and golden colored bark  
5'.....\$39.95

# a 10-15% discount through May.

# FRUIT TREES

## Apples

- Standard size apple trees, when mature, may grow to a height of 20-25', and will usually begin to bear fruit 5-8 years after planting.
- Semi-dwarf apple trees can grow to a height of only 10-15' tall when mature, and will begin to bear fruit earlier than standard size trees, generally in 3-5 years time. Semi-dwarf trees can achieve their smaller stature because they are grafted onto special dwarfing rootstocks, these rootstocks only affect the height of the tree, not the size of the apple.

Standard Size - \$19.95

Semi-Dwarf - \$24.95

Variety	Standard	Semi-dwarf	Description
Fireside	X	X	Late season apple with a sweet, pleasant flavor. Excellent for fresh eating, also has a good storage life.
Haralred	X	X	Late season apple is juicy, tart, firm and a good keeper. Fruit is redder and slightly earlier than Haralson.
Haralson	X	X	Late season apple is hard, crisp and tart. Will store well until March.
Honeycrisp	X	X	Mid-season apple is crisp and juicy. Has a sweet flavor.
Honeygold	X	X	Late season fruit is yellow, juicy, crisp, and sweet.
Northwest Greening	X		Late season apple is large, with a yellow-green color. Is a good apple for cooking.
Red Baron	X		Mid-season apple is crisp and juicy. Bears at an early age.
Red Regent		X	Late season apple is juicy and crisp. Flavor is a good mix of sweet & tart. used for fresh eating & cooking.
Sweet Sixteen	X	X	Mid season apple is crisp with a sweet unusual flavor.
Wealthy		X	Early to mid-season apple with a tart balanced flavor.
Centennial Crabapple	X		Early season, large fruit. Excellent flavor for fresh eating.
Chestnut Crabapple	X		Early to mid-season apple has a pleasant flavor and good texture for fresh eating.

## STACY'S OFFERS A COMPLETE LINE OF *RAIN BIRD* IRRIGATION PRODUCTS:

- Assistance for Do-It-Yourselfers
- Replacement Parts in Stock
- Professional Design & Installation
- Free Estimates

## STACY'S OFFERS A COMPLETE LANDSCAPE PRODUCT LINE:

### Patio Block & Stepping Stones...

#### Edging...

- Bullet edgers 4h x 12 x 4w
- Heavy duty landscape edging 20' long

#### Pavers ...

Holland  
Uni Decor  
Cobblestone

### Weed Barrier ...

6 mil Black Plastic  
Landscape Fabric

Rock...6 Varieties & Mulch...4 Varieties  
Retaining Wall...

- Flagstone
- Wall Block or
- Londonstone and
- Versa-Lock



**Stacy's**  
NURSERY INC.

2305 East Hwy. 12 • Willmar, MN

(320) 235-6010

WWW.STACYSNURSERY.COM

**LANDSCAPING  
THAT'S  
WORTH IT!**

We guarantee our  
stock is  
Minnesota hardy